

ELEWANA COLLECTION

SERENGETI EXPLORER



THE TRUE ART OF SAFARI AN INSPIRED APPROACH

Welcome to Serengeti Explorer, a lodge experience unlike any other. Recognised historically as one of the best bush locations in the Serengeti, Explorer has reimagined a pre-existing site and created an upscale contemporary safari lodge in which the expression of space and freedom meets that of the great outdoors.

At Serengeti Explorer relaxation, meditation and adventure are all present in equal measure. Under the careful stewardship of Elewana's service standards, Explorer has crafted a series of inspired opportunities that will allow the modern safari traveller to experience the wilderness in a more contextual way.

With a deep understanding of our guests' expectations derived from our near-40-year's of hospitality experience, Explorer is undoubtedly the definition of the art of safari.



When

1st May to 5th May 2025
10th May to 15th May 2025

How much?

FOC for Two Nights

Buyers

Complimentary

Press

\$100 per person per night

Exhibitors

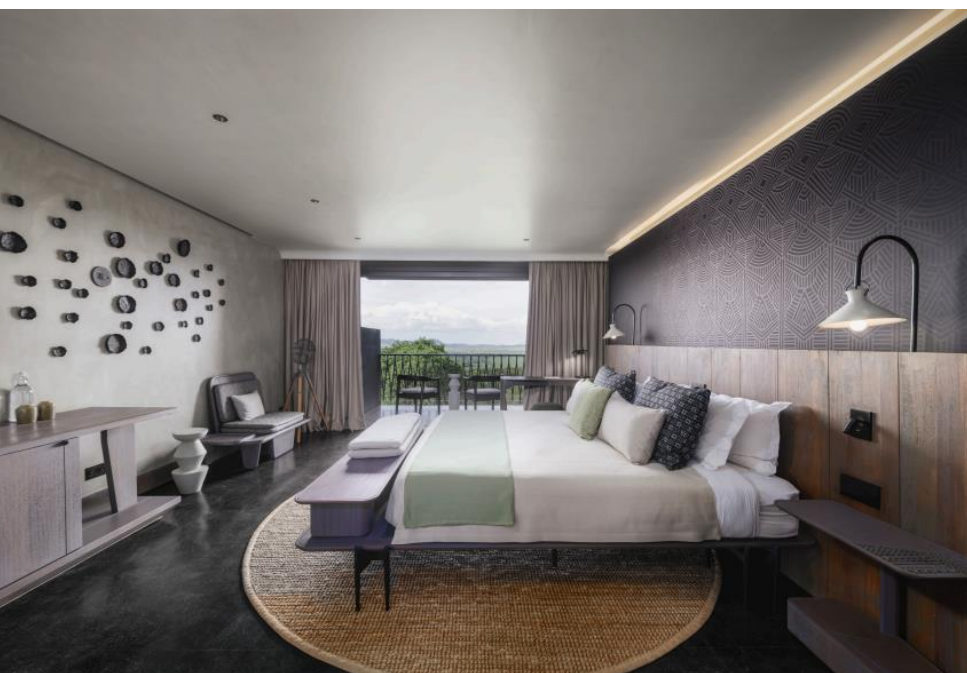
\$100 per person per night

What's included?

Full Board/Game Package
Accommodation for Two Nights
Twice daily shared game drives
Laundry
Soft drinks, house beers, house wines and
selected house spirits, teas, coffees
and refreshments
All meals

What's excluded?

Flights and airport taxes
Transfers (other than to and from our designated
airstrip)
Items of personal nature
Extra meals or any additional dining experiences
outside of the designated meal plan
Flying doctors' medical evacuation insurance
Gratuities
Park/Conservancy fees
Premium Drinks



Contact

Diana Lang'at

+254 730 127 144

diana.langat@elewana.com

<https://explorer.africa>